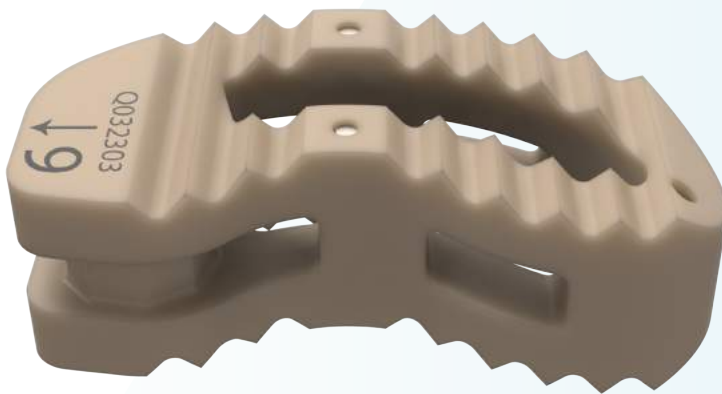


COMET

Lumbar Interbody Fusion Cage



High Radiolucency
allows for postoperative
visualization of fusion status

Controlled Angulation
Improves the accuracy of
placement

Full Range Sizes
best fit varied pathologies

COMET

Maximize Efficiency with Convenience & Safety

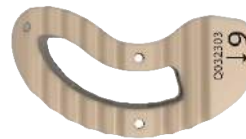
The ReBorn Essence® PEEK Lumbar Intervertebral Cage is designed to optimize bone fusion with a less invasive technique, MIS-TLIF. The Wiltse Transmuscular Paraspinal Approach to the lumbar spine optimizes the surgery of spinal fusion and minimizes the blood loss, paraspinal muscle trauma, and hospital stays. The Cages are available in full range sizes with 1mm increment to best fit varied pathologies.

The PEEK material makes it easier for the confirmation of the postoperative bone formation. In terms of the design, the bullet nose makes it easier for impaction at starting point and the curved shape TLIF cage with posterior fixation system strengthens the triangular stability. The teeth design provides primary stability and prevents the cage from migration. The enormous graft window maximize the fusion area to facilitate the bone growth while the side windows provides better blood flow for bone fusion.



■ Curved Shape

enhances triangular stability with posterior fixation system



■ Large Graft Window

maximizes fusion area for optimal bone growth



■ Side Window

provides better blood flow for bone formation

Implant Catalog



■ PEEK Interbody Fusion Cage

Cat No.	Angle	Height	Length	Width
595-07268	0°	7mm	26mm	14mm
595-08268	4°	8mm	26mm	14mm
595-09268	4°	9mm	26mm	14mm
595-10268	4°	10mm	26mm	14mm
595-11268	4°	11mm	26mm	14mm
595-12268	4°	12mm	26mm	14mm
595-13268	4°	13mm	26mm	14mm
595-14268	4°	14mm	26mm	14mm
595-15268	4°	15mm	26mm	14mm
595-07288	0°	7mm	28mm	14mm
595-08288	4°	8mm	28mm	14mm
595-09288	4°	9mm	28mm	14mm
595-10288	4°	10mm	28mm	14mm
595-11288	4°	11mm	28mm	14mm
595-12288	4°	12mm	28mm	14mm
595-13288	4°	13mm	28mm	14mm
595-14288	4°	14mm	28mm	14mm
595-15288	4°	15mm	28mm	14mm
595-07308	0°	7mm	30mm	16mm
595-08308	4°	8mm	30mm	16mm
595-09308	4°	9mm	30mm	16mm
595-10308	4°	10mm	30mm	16mm
595-11308	4°	11mm	30mm	16mm
595-12308	4°	12mm	30mm	16mm
595-13308	4°	13mm	30mm	16mm
595-14308	4°	14mm	30mm	16mm
595-15308	4°	15mm	30mm	16mm

Please refer to the use of indication
stated in the manual of the ReBorn
Essence® COMET Lumbar
Interbody Fusion Cage.

BAUI Biotech Co., Ltd.

6F., Sec. 1, Zhongxing Rd.,
Wugu Dist., New Taipei City
24872, Taiwan

Tel: +886-2-8976-9538

Fax: +886-2-8976-9530

www.baui.com.tw

Copyright © 2020 BAUI

All rights reserved.

88292002001

 **BAUI SPINE**